



# 1 CORINTHIANS

*Seeing Life through the Mind of Christ*

Got Wisdom?

1 Corinthians 1:4-6; 21-31

- Who was “Paul” and the church at Corinth?
  - Paul:
    - Fierce persecutor of the early church. Acts 9
    - Miraculous conversion - “Damascus Rd”
    - After conversion; evangelist, church planter. Wrote 13/27 NT books.
  - Church at Corinth:
    - Capital City of Greece. Roman Empire.
    - Formed 50-58AD. Acts 18.
      - Growth pains: divisions, good/bad theology
    - Paul writes to establish Body of Christ.



(Constantinople)  
Byzantium

**BITHYNIA**

● Nicaea

● Neapolis

● Philippi

**MACEDONIA**

● Amphipolis

● Thessalonica

● Berea

▲ Mt. Olympus

**GREECE**

**ACHAIA**

● Corinth

● Delphi

● Athens

● Corinth

● Cenchreae

● Sparta

● Samothrace

● Apollonia

● Troy

● Troas

● Assos

● Lesbos

● Mitylene

● Chios

● Samos

● Patmos

● Cos

● Cnidus

● Patara

● Pergamum

● Thyatira

● Smyrna

● Sardis

● Philadelphia

● Ephesus

● Trogyllium

● Miletus

● Hierapolis

● Laodicea

● Colossae

● Perga

● Attalia

**RHODES**

● Myra

**GALATIA**

**CAPPADOCIA**

**LYCAONIA**

**ASIA**

**PHRYGIA**

● Antioch

● Iconium

● Lystra

● Derbe

**CILICIA**

● Tarsus

**PAMPHYLIA**

**CYPRUS**

● Salamis

● Paphos

● Phoenix

● Fair Havens

● Claudia

**CRETE**

● Salmone

● Lasea

**PHOENICIA**

**GALILEE**

**SAMARIA**

**JUDEA**


Mediterranean  
Sea





The Corinth Canal, carrying ship traffic between the western Mediterranean Sea and the Aegean Sea. It is 4.0 mi in length and only 70 ft wide at its base, making it impassable for most modern ships. It has little economic importance in the modern-day.



- 
1. The richness of the knowledge of Christ is the source of truth. Through its application, I come to know the wisdom of God.

### Definitions:

- A. “Learning” – the acquisition of knowledge in a particular area or field.
- B. “Wisdom” – the application of knowledge so that wise decisions and judgments are made.
  - Paul’s Damascus Road experience.
  - Confirmation of the church. V 6.



## 1 CORINTHIANS

Every “thought” is like a tree that grows in our brains, eventually becoming a “forest.” Our sources of knowledge “feed” our trees.





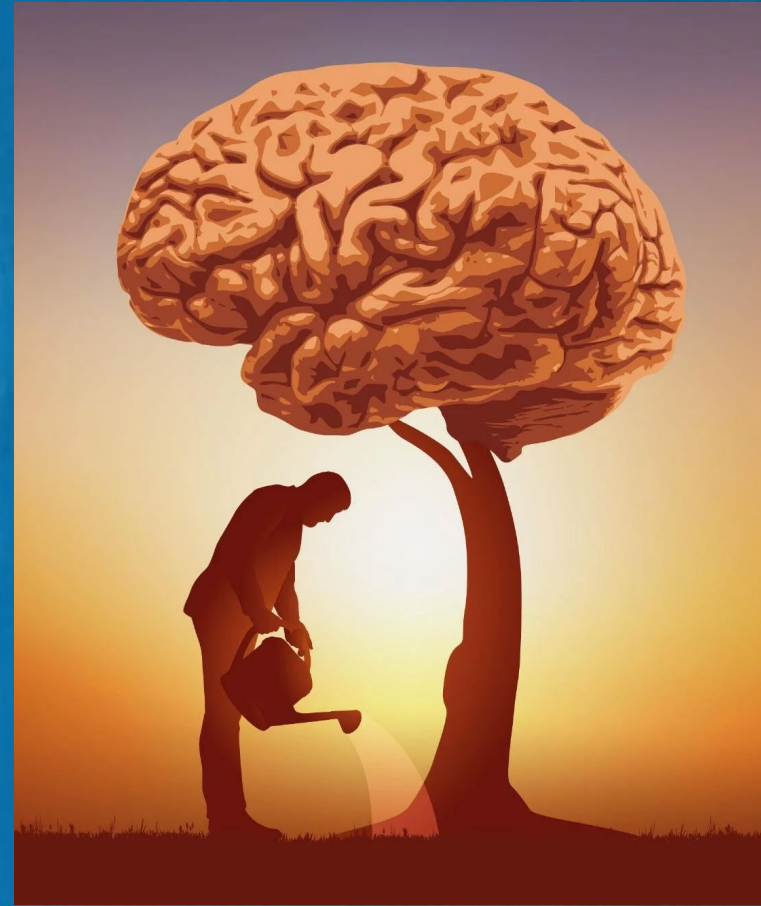
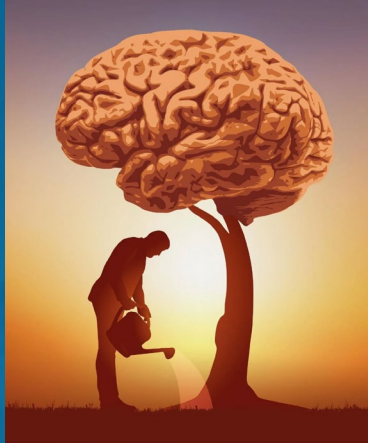
2. Paul had discovered a simple truth – there are two opposing trees of knowledge: the world’s and God’s.

**A. “Wisdom” of the world.** Unbelieving society – peers, friends, people of influence in our lives, media – movies, social media; **generally, what the *majority* tells us is so.**


**B. Wisdom of God.**

- **1 Cor. 1:18** For the word of the cross is folly to those who are perishing, but to us who are being saved it is the power of God. (ESV)
- 1 Cor 1:28-29, 30.






If the size of the tree represents your dependence on a wisdom-source, which would be your God-source??



3. The wisdom of the world will often contradict the wisdom of God. Satan's snare will be to convince you that fitting in is more important than being a light in a dark room.

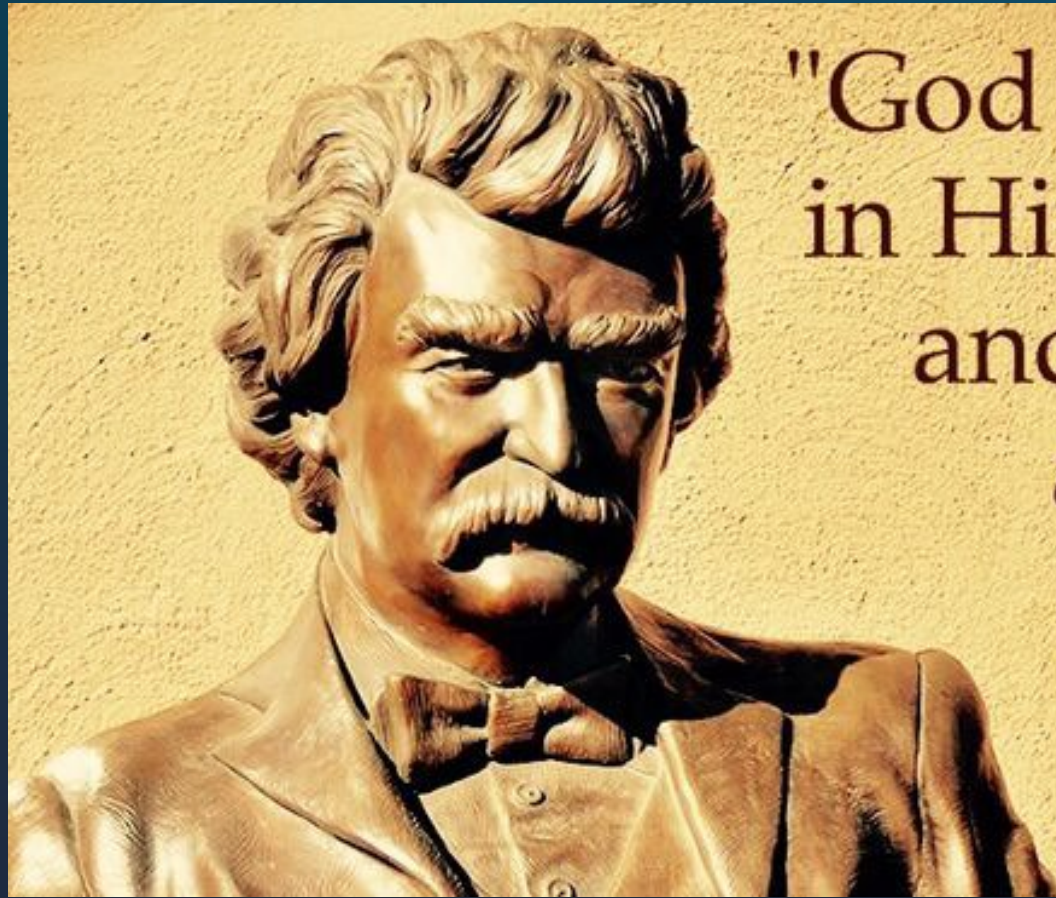
- “Cultural Christianity” is a form of Christianity characterized by superficial adherence to God's word rather than a committed personal relationship with Jesus that sees God's Word is the very source of truth.



“If you, like me, are a Christian parent raising younger kids, it can be challenging to know how best to help them navigate schools and neighborhoods where a Christian understanding of sex as only belonging in male-female marriage is seen as wrong and harmful. It can also be hard to know how to help them relate to friends and teachers who identify as something other than their biological sex.”


- Rachel Gilson *Parenting Without Panic in an LGBTQ World. Disciplining our Kids with Jesus’s Love and Truth.* (quote from Rebecca McLaughlin).





"God created man  
in His own image  
and man, being  
a gentleman,  
returned the  
favor."

~ Mark Twain



## 4. Have you found your “boast” in Jesus Christ as the Lord of your life?

- 1 Cor. 1:30-31 And because of him you are in Christ Jesus, who **became to us wisdom from God**, righteousness and sanctification and redemption, <sup>31</sup> so that, as it is written, "**Let the one who boasts, boast in the Lord.**" (ESV)






- Summary points:

- A. The richness of the knowledge of Christ is the source of truth. Through its application, I come to know the wisdom of God.
- B. Paul had discovered a simple truth – there are two opposing trees of knowledge: the world's and God's.
- C. The wisdom of the world will often contradict the wisdom of God. Cultural Christianity is when we choose to fit it rather than follow Jesus as lord.
- D. Have you found your boast in Jesus Christ as the Lord of your life?



- Why should someone believe that the wisdom of God revealed in Jesus is wiser, better, and best as compared to all other human wisdom?
  - A. Because that has been the testimony of millions over the last 2000 years. It is our testimony.
  - B. “Foolishness” of the cross still saves people.
    - **1 Cor.** How do you explain the fruit of the cross unless it is because of who died upon it and what happens to a life that believes that truth? 1 Cor 1:21



"Wisdom is the  
knowledge *of* God and a  
life lived *for* God."

TRIPP PRINCE

